

MASSTABELLE | FINDING THE RIGHT SIZE | TABLEAU DE MESURES

Herren | Men | Hommes

| Größen Sizes Tailles | XS | S | M | L | XL | XXL | 3XL | 4XL | 5XL | 6XL |
|--|----|--------|---------|--------|--------|--------|--------|---------|-----|-----|
| Kragenweite Neck Encolure | | | | | | | | | | |
| cm | 36 | 37-38 | 39-40 | 41-42 | 43-44 | 45-46 | 47-48 | 49-50 | 52 | 54 |
| inch | 14 | 14½-15 | 15½-15½ | 16-16½ | 17-17½ | 17½-18 | 18½-19 | 19½-19½ | 20½ | 21½ |
| STRICK- UND WIRKWARE | | | | | | | | | | |
| WEFT- AND WARP-KNITTED FABRICS | | | | | | | | | | |
| MATIÈRE DE MAILLE ET DE TRICOT | | | | | | | | | | |
| Merinowolle Merino wool Laine mérinos | | | | | | | | | | |
| Oberweite Total chest measurement Tour de poitrine | | 106 | 110 | 114 | 120 | 128 | 136 | 144 | | |
| Rückenlänge Back length Longueur dos | | 67 | 68 | 69 | 71 | 73 | 75 | 77 | | |
| Ärmelänge v. Rückenmitte Sleeve length measured from center back Longueur manche depuis milieu dos | | 84,5 | 86 | 87,5 | 89,5 | 91,5 | 92,5 | 93,5 | | |
| HEMDEN SHIRTS CHEMISES | | | | | | | | | | |
| modern fit | | | | | | | | | | |
| Oberweite Total chest measurement Tour de poitrine | | 114 | 120 | 126 | 132 | 138 | 144 | | | |
| Taillenweite Waist width Tour de taille | | 102 | 106 | 112 | 122 | 130 | 136 | | | |
| Rückenbreite Back width Largeur dos | | 47 | 49 | 50,5 | 52 | 53,5 | 55 | | | |
| Hemdlänge Shirt length Longueur de jupe | | | | | | | | | | |
| bei AL 12 kurz Short sleeve Manches courtes | | 82 | 82 | 82 | 85 | 85 | 90 | | | |
| bei AL 64 normal Regular sleeve Manches normales | | 82 | 82 | 82 | 85 | 85 | 90 | | | |
| bei AL 58 Extra short sleeve Manches extra courtes | | 82 | 82 | 82 | 85 | 85 | 90 | | | |
| bei AL 69 Extra long sleeve Manches extra longues | | 85 | 85 | 85 | 90 | 90 | 90 | | | |
| comfort fit | | | | | | | | | | |
| Oberweite Total chest measurement Tour de poitrine | | 114 | 122 | 128 | 136 | 148 | 154 | 160 | 168 | 176 |
| Taillenweite Waist width Tour de taille | | 108 | 116 | 124 | 136 | 148 | 154 | 160 | 168 | 176 |
| Rückenbreite Back width Largeur dos | | 48 | 51 | 52,5 | 54 | 56 | 58 | 60 | 62 | 64 |
| Hemdlänge Shirt length Longueur de jupe | | | | | | | | | | |
| bei AL 12 kurz Short sleeve Manches courtes | | 82 | 82 | 82 | 85 | 85 | 90 | 95 | 95 | 95 |
| bei AL 64 normal Regular sleeve Manches normales | | 82 | 82 | 82 | 85 | 85 | 90 | 95 | 95 | 95 |
| bei AL 58 Extra short sleeve Manches extra courtes | | 82 | 82 | 82 | 85 | 85 | 90 | 95 | 95 | 95 |
| bei AL 69 Extra long sleeve Manches extra longues | | 85 | 85 | 85 | 90 | 90 | 90 | 95 | 95 | 95 |
| body fit | | | | | | | | | | |
| Oberweite Total chest measurement Tour de poitrine | | 98 | 104 | 110 | 116 | 124 | | | | |
| Taillenweite Waist width Tour de taille | | 86 | 92 | 98 | 104 | 112 | | | | |
| Rückenbreite Back width Largeur dos | | 38 | 40 | 42 | 44 | 46 | | | | |
| Hemdlänge Shirt length Longueur de jupe | | | | | | | | | | |
| bei AL 12 kurz Short sleeve Manches courtes | | 76 | 78 | 80 | 80 | 83 | | | | |
| bei AL 64 normal Regular sleeve Manches normales | | 76 | 78 | 80 | 80 | 83 | | | | |
| regular fit | | | | | | | | | | |
| Oberweite Total chest measurement Tour de poitrine | | 110 | 116 | 124 | 132 | 144 | 152 | | | |
| Taillenweite Waist width Tour de taille | | 104 | 110 | 118 | 132 | 144 | 152 | | | |
| Rückenbreite Back width Largeur dos | | 46,5 | 48,5 | 50 | 52 | 54 | 56 | | | |
| Hemdlänge Shirt length Longueur de jupe | | | | | | | | | | |
| bei AL 12 kurz Short sleeve Manches courtes | | 82 | 82 | 82 | 85 | 85 | 90 | | | |
| bei AL 64 normal Regular sleeve Manches normales | | 82 | 82 | 82 | 85 | 85 | 90 | | | |
| City 112 | | | | | | | | | | |
| Oberweite Total chest measurement Tour de poitrine | | 112 | 118 | 126 | 132 | 142 | 150 | | | |
| Taillenweite Waist Tour de taille | | 104 | 112 | 120 | 128 | 140 | 150 | | | |
| Rückenbreite Back width Largeur dos | | 45 | 47 | 49 | 51 | 53 | 55 | | | |
| Hemdlänge Shirt length Longueur de jupe | | | | | | | | | | |
| | | 80 | 80 | 80 | 85 | 85 | 85 | | | |
| modern fit Pilot Feuerwehr | | | | | | | | | | |
| Oberweite Total chest measurement Tour de poitrine | | 108 | 114 | 120 | 126 | 132 | 138 | 144 | | |
| Taillenweite Waist Tour de taille | | 98 | 102 | 106 | 112 | 122 | 130 | 136 | | |
| Rückenbreite Back width Largeur dos | | 45 | 47 | 49 | 50,5 | 52 | 53,5 | 55 | | |
| Hemdlänge Shirt length Longueur de jupe | | | | | | | | | | |
| bei AL 12 kurz Short sleeve Manches courtes | | 78 | 78 | 78 | 78 | 81 | 81 | 86 | | |
| bei AL 64 normal Regular sleeve Manches normales | | 78 | 78 | 78 | 78 | 81 | 81 | 86 | | |
| bei AL 69 Extra long sleeve Manches extra longues | | 81 | 81 | 81 | 81 | 86 | 86 | 90 | | |
| POLO POLO POLO | | | | | | | | | | |
| casual | | | | | | | | | | |
| Oberweite Total chest measurement Tour de poitrine | | 104 | 110 | 116 | 124 | 134 | 144 | 152 | | |
| Rückenlänge Back length Longueur dos | | 70 | 72 | 74 | 76 | 79 | 81 | 84 | | |
| Ärmellänge Sleeve length Longueur de manches | | 24 | 25 | 26 | 27 | 28 | 28 | 29 | | |

Alle Angaben in cm | All specifications in cm | Mesures en cm

Alle Angaben sind Fertigmaße. | All measurements refer to the finished size. | Toutes les dimensions indiquées correspondent aux dimensions finies.

K R A G E N | C O L L A R | C O L S



Kent
Kent
Kent



New Kent
New Kent
Nouveau Kent



New York Kent
New York Kent
New York Kent



Haifisch
Cutaway
Italien



Button-Down
Button-down
Pointes boutonnées

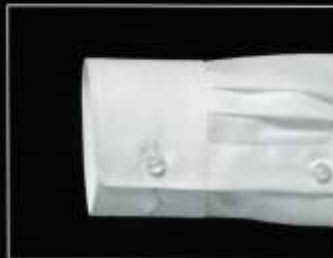


Italian Kent
Italian Kent
Italian Kent

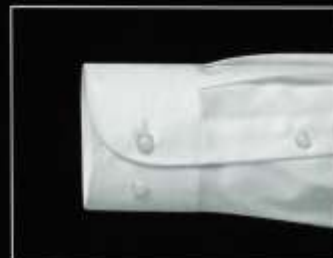


Elbe
Elbe
Elbe

M A N S C H E T T E N | C U F F S | P O I G N E T S



Office
Office
Office



Sport
Single
Sport



Umschlag
Double
Mousquetaire

MASSTABELLE | FINDING THE RIGHT SIZE | TABLEAU DE MESURES

Herren | Men | Hommes

| Größen Sizes Tailles | XS | S | M | L | XL | XXL | 3XL | 4XL | 5XL | 6XL |
|---|----|--------|---------|--------|--------|--------|--------|---------|-----|-----|
| Kragenweite Neck Encolure | | | | | | | | | | |
| cm | 36 | 37-38 | 39-40 | 41-42 | 43-44 | 45-46 | 47-48 | 49-50 | 52 | 54 |
| inch | 14 | 14½-15 | 15½-15¾ | 16-16½ | 17-17½ | 17½-18 | 18½-19 | 19½-19¾ | 20½ | 21½ |
| STRICK- UND WIRKWARE | | | | | | | | | | |
| WEFT- AND WARP-KNITTED FABRICS | | | | | | | | | | |
| MATIÈRE DE MAILLE ET DE TRICOT | | | | | | | | | | |
| Merinowolle Merino wool Laine mérinos | | | | | | | | | | |
| Oberweite Total chest measurement Tour de poitrine | | 106 | 110 | 114 | 120 | 128 | 136 | 144 | | |
| Rückenlänge Back length Longueur dos | | 67 | 68 | 69 | 71 | 73 | 75 | 77 | | |
| Armlänge v. Rückenmitte Sleeve length measured from center back Longueur manche depuis milieu dos | | 84,5 | 86 | 87,5 | 89,5 | 91,5 | 92,5 | 93,5 | | |
| HEMDEN SHIRTS CHEMISES | | | | | | | | | | |
| modern fit | | | | | | | | | | |
| Oberweite Total chest measurement Tour de poitrine | | 114 | 120 | 126 | 132 | 138 | 144 | | | |
| Taillenweite Waist width Tour de taille | | 102 | 106 | 112 | 122 | 130 | 136 | | | |
| Rückenbreite Back width Largeur dos | | 47 | 49 | 50,5 | 52 | 53,5 | 55 | | | |
| Hemdlänge Shirt length Longueur de jupe | | | | | | | | | | |
| bei AL 12 kurz Short sleeve Manches courtes | | 82 | 82 | 82 | 85 | 85 | 90 | | | |
| bei AL 64 normal Regular sleeve Manches normales | | 82 | 82 | 82 | 85 | 85 | 90 | | | |
| bei AL 58 Extra short sleeve Manches extra courtes | | 82 | 82 | 82 | 85 | 85 | 90 | | | |
| bei AL 69 Extra long sleeve Manches extra longues | | 85 | 85 | 85 | 90 | 90 | 90 | | | |
| comfort fit | | | | | | | | | | |
| Oberweite Total chest measurement Tour de poitrine | | 114 | 122 | 128 | 136 | 148 | 154 | 160 | 168 | 176 |
| Taillenweite Waist width Tour de taille | | 108 | 116 | 124 | 136 | 148 | 154 | 160 | 168 | 176 |
| Rückenbreite Back width Largeur dos | | 48 | 51 | 52,5 | 54 | 56 | 58 | 60 | 62 | 64 |
| Hemdlänge Shirt length Longueur de jupe | | | | | | | | | | |
| bei AL 12 kurz Short sleeve Manches courtes | | 82 | 82 | 82 | 85 | 85 | 90 | 95 | 95 | 95 |
| bei AL 64 normal Regular sleeve Manches normales | | 82 | 82 | 82 | 85 | 85 | 90 | 95 | 95 | 95 |
| bei AL 58 Extra short sleeve Manches extra courtes | | 82 | 82 | 82 | 85 | 85 | 90 | 95 | 95 | 95 |
| bei AL 69 Extra long sleeve Manches extra longues | | 85 | 85 | 85 | 90 | 90 | 90 | 95 | 95 | 95 |
| body fit | | | | | | | | | | |
| Oberweite Total chest measurement Tour de poitrine | | 98 | 104 | 110 | 116 | 124 | | | | |
| Taillenweite Waist width Tour de taille | | 86 | 92 | 98 | 104 | 112 | | | | |
| Rückenbreite Back width Largeur dos | | 38 | 40 | 42 | 44 | 46 | | | | |
| Hemdlänge Shirt length Longueur de jupe | | | | | | | | | | |
| bei AL 12 kurz Short sleeve Manches courtes | | 76 | 78 | 80 | 80 | 83 | | | | |
| bei AL 64 normal Regular sleeve Manches normales | | 76 | 78 | 80 | 80 | 83 | | | | |
| regular fit | | | | | | | | | | |
| Oberweite Total chest measurement Tour de poitrine | | 110 | 116 | 124 | 132 | 144 | 152 | | | |
| Taillenweite Waist width Tour de taille | | 104 | 110 | 118 | 132 | 144 | 152 | | | |
| Rückenbreite Back width Largeur dos | | 46,5 | 48,5 | 50 | 52 | 54 | 56 | | | |
| Hemdlänge Shirt length Longueur de jupe | | | | | | | | | | |
| bei AL 12 kurz Short sleeve Manches courtes | | 82 | 82 | 82 | 85 | 85 | 90 | | | |
| bei AL 64 normal Regular sleeve Manches normales | | 82 | 82 | 82 | 85 | 85 | 90 | | | |
| City 112 | | | | | | | | | | |
| Oberweite Total chest measurement Tour de poitrine | | 112 | 118 | 126 | 132 | 142 | 150 | | | |
| Taillenweite Waist Tour de taille | | 104 | 112 | 120 | 128 | 140 | 150 | | | |
| Rückenbreite Back width Largeur dos | | 45 | 47 | 49 | 51 | 53 | 55 | | | |
| Hemdlänge Shirt length Longueur de jupe | | 80 | 80 | 80 | 85 | 85 | 85 | | | |
| modern fit Pilot Feuerwehr | | | | | | | | | | |
| Oberweite Total chest measurement Tour de poitrine | | 108 | 114 | 120 | 126 | 138 | 144 | | | |
| Taillenweite Waist Tour de taille | | 98 | 102 | 106 | 112 | 122 | 130 | 136 | | |
| Rückenbreite Back width Largeur dos | | 45 | 47 | 49 | 50,5 | 52 | 53,5 | 55 | | |
| Hemdlänge Shirt length Longueur de jupe | | | | | | | | | | |
| bei AL 12 kurz Short sleeve Manches courtes | | 78 | 78 | 78 | 78 | 81 | 81 | 86 | | |
| bei AL 64 normal Regular sleeve Manches normales | | 78 | 78 | 78 | 78 | 81 | 81 | 86 | | |
| bei AL 69 Extra long sleeve Manches extra longues | | 81 | 81 | 81 | 81 | 86 | 86 | 90 | | |
| POLO POLO POLO | | | | | | | | | | |
| casual | | | | | | | | | | |
| Oberweite Total chest measurement Tour de poitrine | | 104 | 110 | 116 | 124 | 134 | 144 | 152 | | |
| Rückenlänge Back length Longueur dos | | 70 | 72 | 74 | 76 | 79 | 81 | 84 | | |
| Ärmellänge Sleeve length Longueur de manches | | 24 | 25 | 26 | 27 | 28 | 28 | 29 | | |

Alle Angaben in cm | All specifications in cm | Mesures en cm

Alle Angaben sind Fertigmaße. | All measurements refer to the finished size. | Toutes les dimensions indiquées correspondent aux dimensions finies.